

PIPE LOUNGE®



SUBMITAL RECORD



SEE MORE ONLINE

Submitted to: _____

To: _____

Project: _____

Location: _____

Approved by: _____

Date: _____

Remarks: _____

Submitted by: _____

Name: _____ Signature: _____

Company: _____

Address: _____

Phone: _____

Email: _____

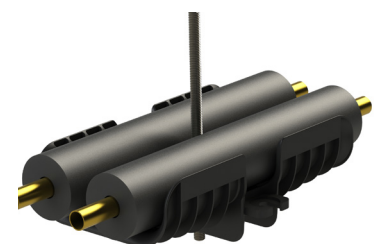
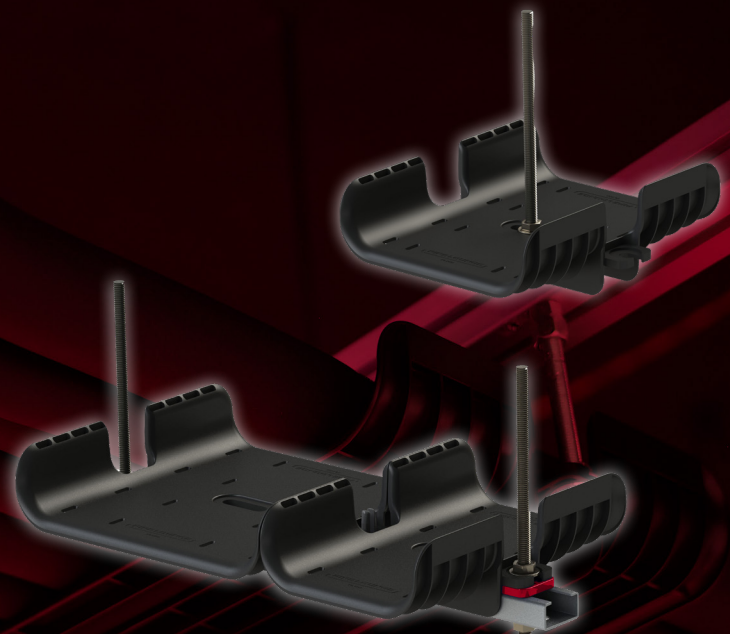
Date Submitted: _____



PIPE LOUNGE

MULTIPLE-PIPE SUPPORT SYSTEM
WITHOUT THE NEED FOR STRUT.

RE-DEFINING PIPE SUPPORT.



WHAT IS PIPELOUNGE?

An innovative system that redefines how multiple pipes are supported, Pipelounge cushions and allows for expansion and contraction of refrigerant lines.

WHY CHOOSE PIPELOUNGE?

Economical & Robust: Ensures a high-quality installation for both new builds and retrofits whilst saving time and money.

Versatile: Connect horizontally for wider spans or stack vertically in tight spaces without the need for a strut.

WIDE RANGE OF SIZES:

PLMINI	PIPELOUNGE Mini
PL6	PIPELOUNGE 6"
PL8	PIPELOUNGE 8"
PL12	PIPELOUNGE 12"
PL16	PIPELOUNGE 16"
PL20	PIPELOUNGE 20"
PL24	PIPELOUNGE 24"



LOAD & SUPPORT

Pipelounge supports are rated for 110lbs loads. For loads over 110lbs a standard metal strut section must be used.

TECHNICAL FEATURES

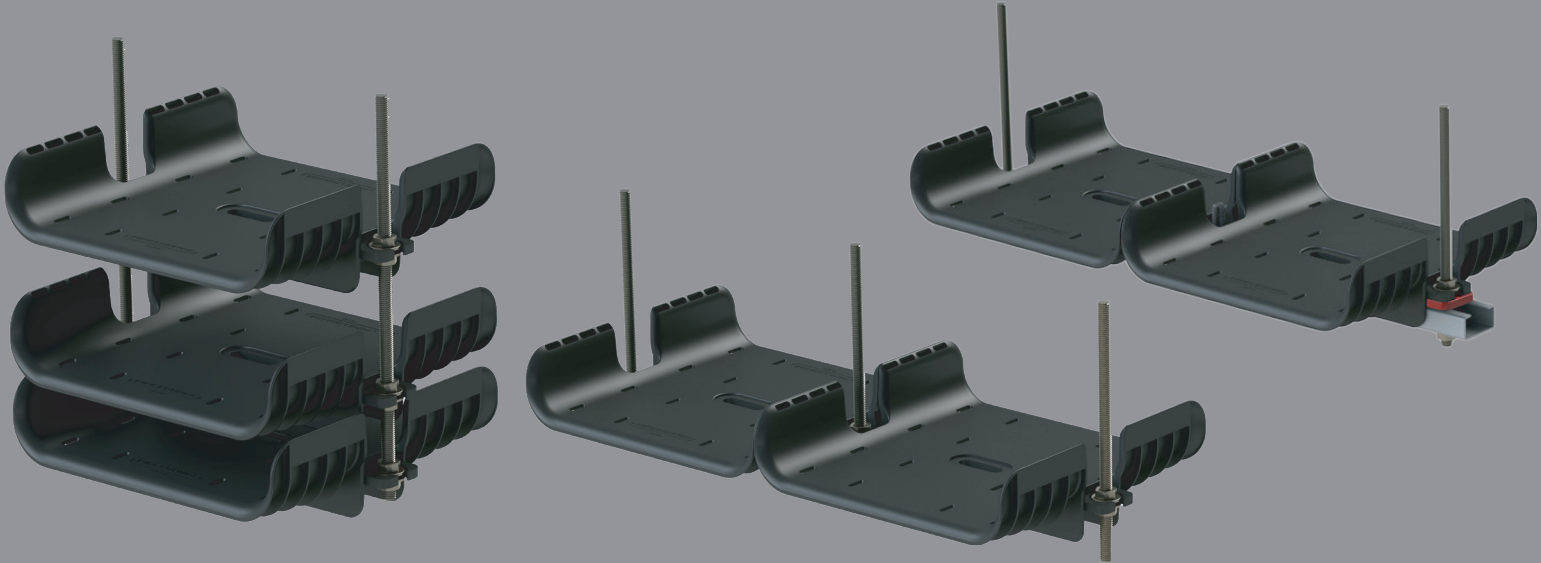
Material: Tough, flame resistant PC/ABS (halogen free)

Max Load: 110lbs (without metal support)

Fire Resistance: UL94 V-0, UL94 5VA

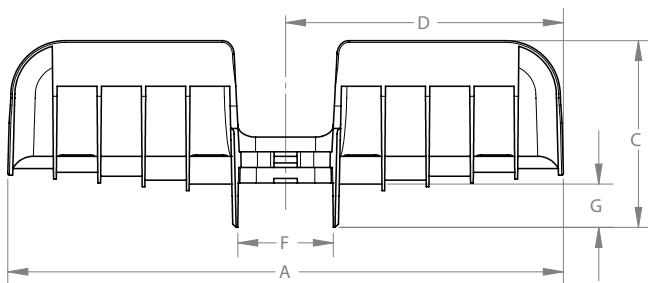
Sustainability: 100% recyclable

Installation Guide for the Pipelounge multi-pipe support system

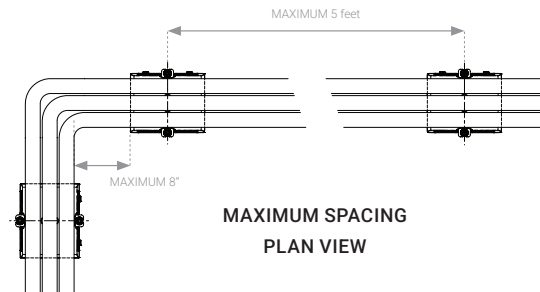
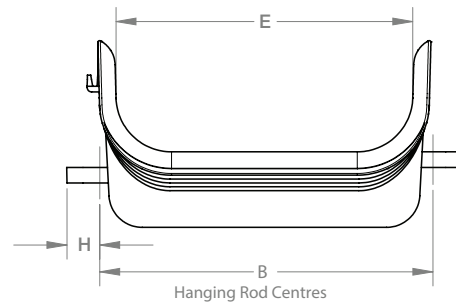


MODEL	A	B	C	D	E	F	G	H
PL Mini	12"	4-1/2"	3-3/8"	6"	3-3/4"	1-5/8"	3/4"	5/8"
PL6	12"	6"	3-3/8"	6"	5-3/8"	1-5/8"	3/4"	5/8"
PL8	12"	8"	3-3/8"	6"	7-3/8"	1-5/8"	3/4"	5/8"
PL12	12"	12"	3-3/8"	6"	11-3/8"	1-5/8"	3/4"	5/8"
PL16	12"	16"	3-3/8"	6"	15-3/8"	1-5/8"	3/4"	5/8"
PL20	12"	20"	3-3/8"	6"	19-3/8"	1-5/8"	3/4"	5/8"
PL24	12"	24"	3-3/8"	6"	23-3/8"	1-5/8"	3/4"	5/8"

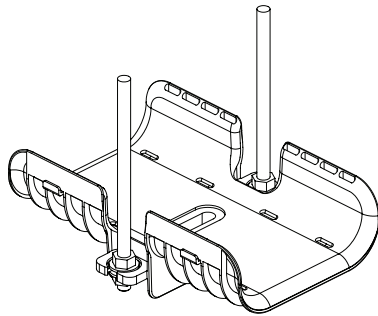
SIDE VIEW



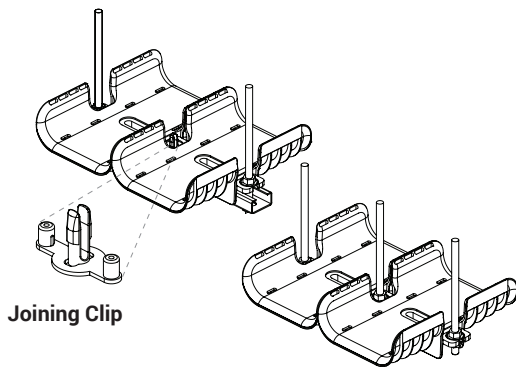
END VIEW



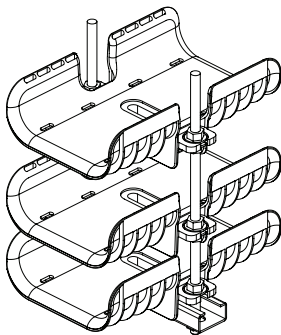
Single bracket arrangement



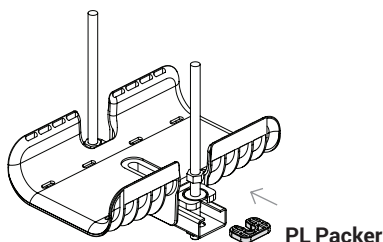
Multiple horizontal bracket arrangement



Multiple stacked bracket arrangement



Securing bracket to strut framing system



Support brackets shall be installed in accordance with this guidance.

1. Pipelounge brackets are designed to support horizontally arranged insulated refrigerant pipes.
2. Select each bracket width to suit the number of supported pipes.
3. Distribute insulated pipes uniformly across the full width of each bracket.
4. Maximum load of 110 pounds per bracket when not supported by a strut framing system designed in accordance with the relevant manufacturer's printed instructions for the final load.
5. Use the Pipelounge joining clip when connecting multiple brackets horizontally across a steel strut framing system.
6. Vertically stacked brackets shall each be connected directly to the hanging rods.
7. When installing bracket on a strut framing system, fit one PL Packer beneath each upper mounting tab as shown, to support tab when securing the hanging rod through the tab.
8. Provide brackets at maximum 5 foot intervals along the length of the supported pipework and a maximum of 8" from each change in direction.
9. Secure insulated pipes to each bracket by hook-and-loop fastening straps. Do not compress the pipe insulation material and allow independent longitudinal movement of each pipe through the bracket.
10. Select the length of each fastening strap to surround the entire perimeter of the bracket and supported pipes, plus a minimum 4" overlap.
11. Affix each bracket directly to the building structure by high tensile 3/8" threaded rod connected to both sides of the bracket.
12. Secure each bracket to the hanging rod with flanged nuts from above and below.
13. Trim and file hanging rods to align with the underside of the bracket to prevent injury.
14. Where seismic restraint of the support system is required, fit Pipelounge saddles over a 1-5/8" strut framing system, with a certified seismic restraint system applied directly to the strut.
15. Adjust the strength and span of the selected anchoring and strut systems to accommodate the load of multiple stacked or joined brackets.
16. Provide additional protection, independent and external to the bracket and supported pipework where brackets are installed in a location subject to sunlight, wind, rain, snow and/or ice.

This guidance has been prepared with reference to the following reports:
 13099 Construction Regulation Advice, AED 23/10/24
 LS24-0038 LT Load Test Report, LMATS 11/01/24
 23985 SA1a CS/cs Assessment of Structural Suitability, CSE 16/5/24
 US Product Approval report R5727-02-00
 Declaration of Conformity TCFPL2025

Establish any project-specific limitations and certification requirements relevant to the installation and arrangement of refrigerant pipework, insulation and supports prior to commencing installation.

Contact Malco Tools, Inc. for further information and guidance where the circumstances of an installation cannot accommodate these instructions. Design and Utility Patents Pending



Declaration of Conformity according to;

Code of Federal Regulations 16 CFR part 1107
Approved American National Standard

We, **Pipelounge**, located at **6/380 West Botany Street, Rockdale NSW 2216, Australia**, declare in exclusive responsibility that the **Pipelounge** meets the essential health and safety requirements of the above-mentioned directives.

To ensure presumption of conformity, the product has been assessed for compliance with the following directives and standards either in part or in full.

Directive	Requirements and / or Standards applied
Code of Federal Regulations Approved American National Standard (ANSI)	16 CFR par 1107, 19 CFR 134, 29 CFR 1910 ANSI/MSS SP-58-2018 ANSI/MSS SP-127-2014a

Authorised Representative:
The Malco Group
14080 Hwy 55, Annandale MN 55302, USA.

TCF reference no. : PL2025

22 September 2025

Director

Andrew Markopoulos



6/380 West Botany St,
Rockdale NSW 2216
Australia

California Proposition 65 Declaration

The Safe Drinking Water and Toxic Enforcement Act of 1986 (Health and Safety Code section 25249.5 et seq.), also known as Proposition 65, requires that the Governor revise and republish at least once per year the list of chemicals known to the State to cause cancer or reproductive toxicity within the meaning of the Act (Health and Safety Code section 25249.8).

The list is published in Title 27, California Code of Regulations, section 27001, full list available on the website of the Office of Environmental Health Hazard Assessment (oehha.ca.gov).

I declare that the company meets the criteria laid down in the Proposition 65 (State of California) and supply no parts with substances which are known to cause cancer & reproductive toxicity.

Signed on behalf of: Pipelounge

22 September 2025

Director

A handwritten signature in black ink, appearing to read "Andrew Markopoulos", written over a thin horizontal line.

Andrew Markopoulos

Property	Unit	Test Method	Test Condition	Self Extinguishing Grade
Model				AC3100
Melt Flow Index	g/10 min	ASTM D-1238	240°C × 5kg	25
Melt Flow Index	g/10 min	ASTM D-1238	260°C × 2.16kg	17
IZOD Impact Strength	kg-cm/cm	ASTM D-256	23°C, 3.2mm, Notched	65
Specific Gravity	-	ASTM D-792	23°C/23°C	1.18
Tensile Strength	kg/cm ²	ASTM D-638	23 °C	650
Flexural Strength	kg/cm ²	ASTM D-790	23 °C	1000
Flexural Modulus	kg/cm ²	ASTM D-790	23 °C	25000
Rockwell Hardness	R-scale	ASTM D-785	23 °C	R-118
Vicat Softening Point	°C	ASTM D-1525	VICAT(10N °C)	107
Heat Deflection Temperature	°C	ASTM D-648	Unannealed 18.6 kg/cm ² (1.8Mpa)(6.4mm)	90
Molding Shrinkage	%	ASTM D-955	3.2mm	0.4 ~ 0.6
Combustibility		UL-94	File No. E162823	v-0 1 ~ 3 mm 5VA 3 mm 5VB 2.3 mm
Features	Flame retardant, Halogen free			

All tests were run under laboratory conditions, ASTM, ISO testing procedures.
The data are intended as a general guide only.

Formosa Chemicals & Fibre Corp. Plastics Div.

TEL: +886-2-27122211 FAX: +886-2-27131649

Address: Building A2, No. 380, Section 6, Nanjing East Road, Neihu District, Taipei City 11470



www.fcfc-plastics.com